

we the curious
Accessibility

Visual Guide



Entering the building

The main entrance of the building has two sets of automatic doors.

These lead into a large, open-plan foyer.



When you come in

If you have purchased tickets in advance, you can scan them on your phone screen (or paper printout) and go straight into the main venue.

If you need to buy tickets, there is a desk with staff.

These staff can help with any questions you might have.



Project What If

When you come in, you'll arrive in Project What If.

The lighting level in this area is low, with dark carpets and walls.

Spotlights and illuminated exhibits provide enough light to see, but some areas may feel dark.



The North Gallery

Next door is the North Gallery. A long area with glass walls that look out onto Anchor Road.

It contains the Kitchen and Greenhouse activity spaces as well as a few noisy exhibits.





The First Floor

On the first floor there are lots of hands-on exhibits with some bright, noisy bits and some dark areas.

You'll also find:

/ Animate It

/ The Tinkering Space

/ Build It (Under 8s)

The Planetarium



If you would like to go to a planetarium show, you will need to buy a ticket at the main entrance or online before you visit.



The Planetarium is very similar to a cinema, except that the screen is on a large dome above your head.

Useful Places



Stairs



Lifts

Useful Places



Outside the toilets



Inside the toilets

Quiet Room

On the first floor, we have a Quiet Room that is available for anyone to use. It has weighted blankets, fiddle toys and adjustable lighting.



Multi Faith Room

Next to our Quiet Room, we have a dedicated space for prayer, contemplation and reflection - for people of faith and no faith.



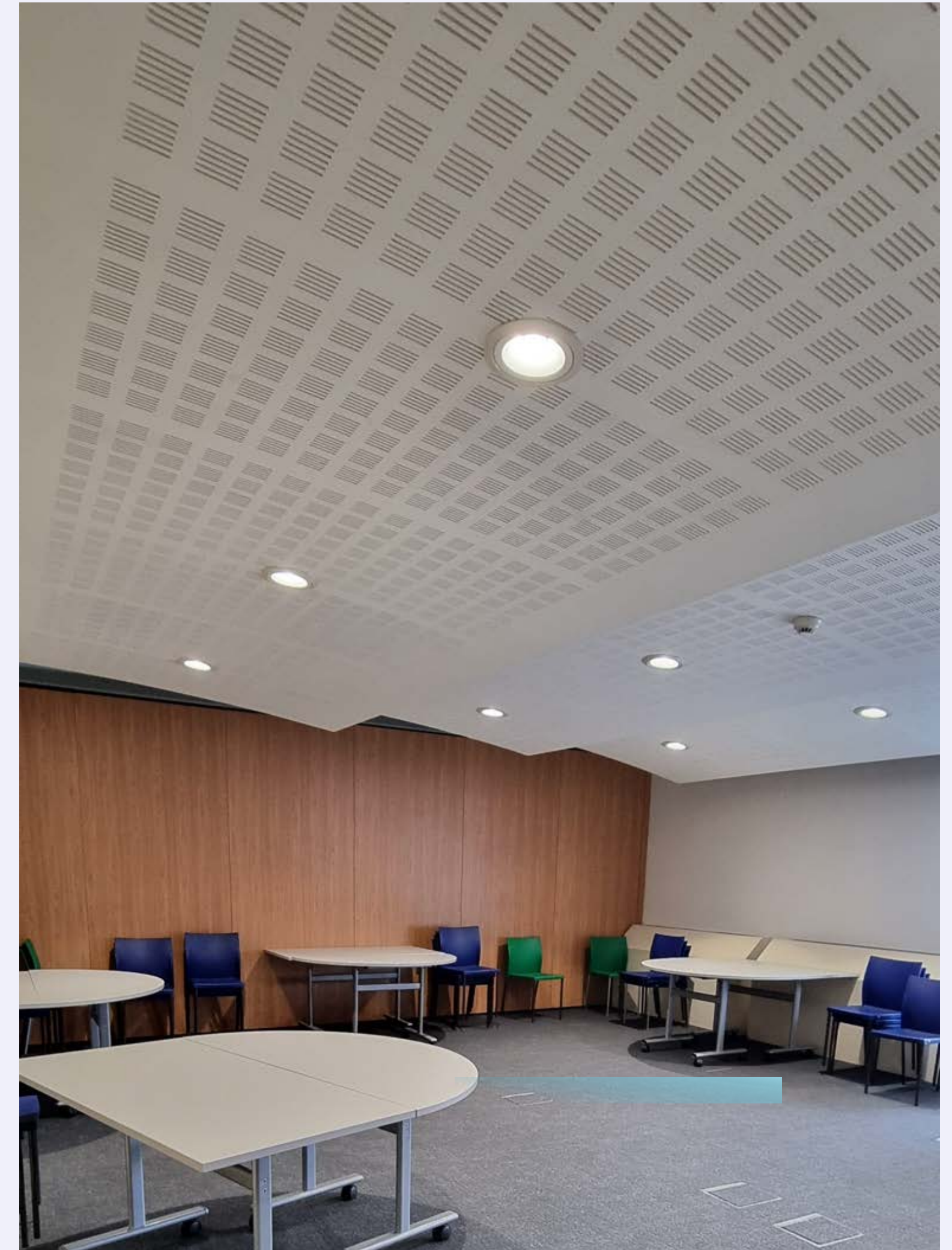
Schools

If you are visiting with your school, you may need to enter our Education Centre on the first floor.



Schools

School workshops take place in our Learning Rooms, which look like this.



Schools

School shows take place in our Studio, which looks like this.

On weekends and school holidays, you can watch a family show in here.



What to expect

We The Curious is a space to touch, chat, have fun and try things out.

There is no set route through the exhibits. You can explore wherever you want at your own pace.

It's ok to be noisy or quiet, to press all the buttons or just look and take it all in.

If you need help or have any questions, look for a member of staff in a grey/black top and coloured lanyard.

